



A PROJECT BY SIGMA ONE



Grand Stand Commercial, S. No. 69 (part)
 Next to Chandni Chowk, Mumbai-Bengaluru Bypass
 Kothrud, Pune - 411 038. simran@sigmaone.in
 Contact us on: +91 20 3251 3131, Simran +91 86000 01003



SIGMA ONE™
CAPITAL

MUMBAI - BENGALURU BYPASS,
 KOTHRUD, PUNE



**Ideal for Auto Showrooms,
Restaurants, Banks, ATM's,
Boutiques, Hyper Market,
Hospitals, Other Retail Outlets,
Roof Top Lounge
Banquet, Gym, Etc.**



**A center-stage
for your business!
Prime spaces
on lease/sale at
Mumbai-Bengaluru bypass**

EXCELLENT FRONTAGE

FLOOR TO CEILING HEIGHT: 20 FEET

**STRATEGICALLY LOCATED ON
MUMBAI-BENGALURU BYPASS, KOTHRUD
NEXT TO CHANDNI CHOWK**

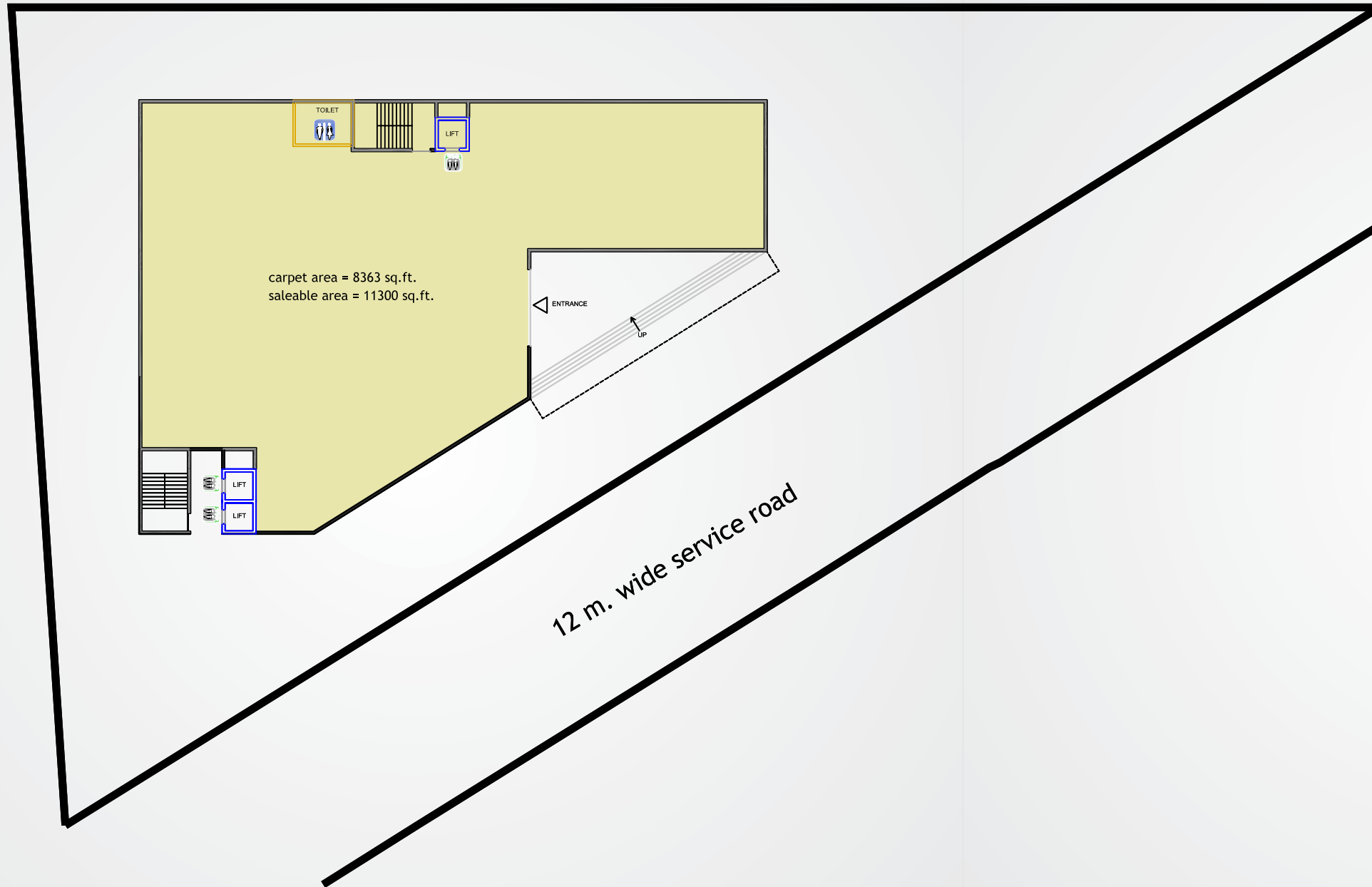
**ALSO AVAILABLE:
UPTO 45, 000 SQ.FT. BUILT-TO-SUIT OPTION
IN AN EXCLUSIVE STAND-ALONE BUILDING
FOR CORPORATE HOUSES & OFFICES**

GROUND FLOOR PLAN OPTION 2



SHOWROOM AND OFFICES AREA STATEMENT		
	Carpet Area	Saleable Area
Showroom - Ground Floor	9018 sq.ft	13527 sq.ft
Mezanine Floor	4500 sq.ft	6765 sq.ft
First Floor	9018 sq.ft	12627 sq.ft
Second Floor	9018 sq.ft	12627 sq.ft
Terrace	9018 sq.ft	11700 sq.ft

GROUND FLOOR PLAN OPTION 1



**Built-To-Suit
commercial spaces
upto 45,000 sq.ft.
independent building**